

BODYWORK/PAINTING/SCRATCHES

● Acceptable

Scratches on the surface of the bodywork regardless of size, provided that they have a shallow depth and so they can easily be removed by polishing.

Scratches on the surface of the vehicle that cannot be removed by polishing but do not damage the anti-rust coating, provided that no more than one scratch is found on the given element and that the length of the scratch does not exceed 100 mm, and the width 5 mm or the diameter is maximum 20 mm. A total of 3 damages corresponding to the above are acceptable on the entire bodywork.



● Not acceptable

Scratches on the body surface, regardless of size, which damage the anti-rust coating. Scratches which cannot be removed by polishing and whose length exceeds 100 mm and have a width of 5 mm or a diameter greater than 20 mm.



BODY/ PAINTING/DAMAGE TO THE SURFACE OF THE VEHICLE

● Acceptable

Scratches on the surface of the vehicle due to gravel impacts, provided that their diameter does not exceed 3 mm, and the anti-rust coating is not damaged. In an area of 10cmX10cm maximum 3 such scratches, on the entire body no more than 3 areas affected with gravel impact is acceptable.



● Not acceptable

Damage to the paintwork of the vehicle (gravel impact) with a diameter of more than 3 mm. Traces of gravel impact on the surface of the vehicle, which damage the anti-rust coating.

Any damage on the painting (e.g. bird droppings, traces left by the CB radio antenna) — regardless of their size — which cannot be removed by polishing.



BODY /DENTS , TRACES LEFT BY AUXILIARY DEVICES

● Acceptable

A dent or bruise (without damage to the painting) with a diameter of not more than 20 mm. Maximum 3 dents or bruise may be on the entire body of the vehicle (e.g. doors, sides).



● Not acceptable

Dents which also damage the paintwork of the vehicle (e.g. breakages) and which are larger than 20 mm in diameter.

Cases when the number of dents on the entire body of a motor vehicle is more than three.

Any traces left after the installation and/or removal of such accessories by the Customer



BODY/CORROSION

● Not acceptable

Any signs of corrosion, regardless of size and origin, are unacceptable.



BODY REPAIR AND PAINTING

● Not acceptable

Any bodywork repairs and painting that has been carried out negligently or not in accordance with the manufacturer's current technical specifications (e.g. cracking or chipping paint, uneven paint application).



BUMPER SCRATCHES

● Acceptable

Scratches on the bumper that do not cause material loss (per element) no more than one scratch), even if the scratch cannot be removed by polishing. The length of such scratches should not exceed 100 mm, and their width is 5mm or a diameter of 20mm.

Scratches on the underside of the bumper (up to 50 mm from the lower edge of the bumper) provided that the scratches have not caused cracking or denting.



Not acceptable

Scratches that cause material loss.

Scratches with a length of more than 100 mm, a width of 5 mm or a diameter of 20 mm.

Scratches less than 50 mm from the lower edge of the bumper which have caused bending or cracking or which cannot be removed without paintwork, provided that there is more than one scratch per element on the bodywork.



BUMPER/ STRUCTURAL DEFORMATION



Not acceptable

Any deformation of the bumper structure.

Further damage, such as deformations that cause paint to crack. Traces formed due to deformation of the bumper or cracking of the paintwork.

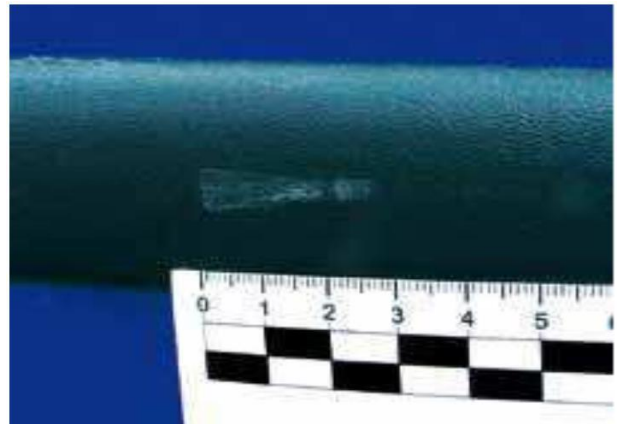


BODY COVERS / SLATS / SCRATCHES



Acceptable

Scratches on external parts (not more than one scratch per element), which did not cause material loss, provided that the length of the damage does not exceed 50 mm, width of 5 mm and with a diameter of less than 20 mm.



● Not acceptable

Scratches on external parts which cannot be removed by paintwork, which caused material losses, their number exceeds one scratch per acceptable element, and their length exceeds 50 mm, have a width of 5 mm or a diameter of more than 20 mm.

Scratches and deformations on the elements of the car body. Traces on the bodywork of the vehicle due to improperly positioned equipment or damaged weld clamps.



MIRRORS/ MECHANICAL DAMAGES

● Acceptable

Scratches on exterior mirror housings (not more than one scratch per element), provided that no part of the mirror housing is broken, and the length of the damage does not exceed 50 mm, width of 5 mm or the diameter is less than 20 mm.



● Not acceptable

Scratches on the exterior mirror housings, which cannot be removed by paintwork, caused material losses, their number exceeds the acceptable one scratch per element, their length exceeds 50 mm, having a width of 5 mm or a diameter of more than 20 mm.

Any breakage of external mirror housings.

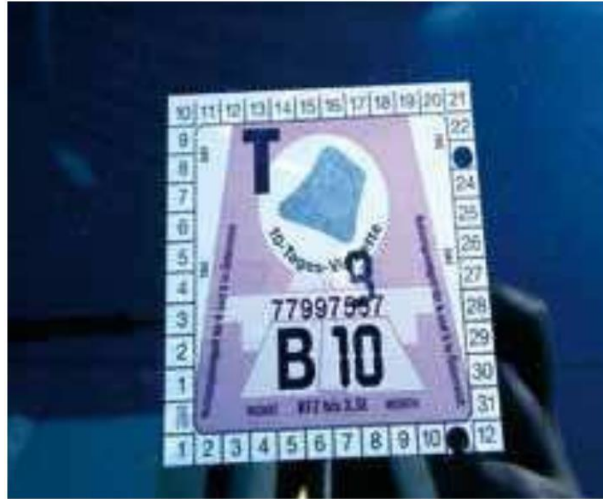
Any mechanical damage to the mirror surface (scratches, cracks).



WINDOWS STICKERS, CRACKS, SCRATCHES

● Acceptable

Stickers not removed from the windows of the vehicle, which do not restrict the view and do not adversely affect the comfort of use of the vehicle or the safety of the driver. k.
Surface and lighter stone impacts that are not located in the field of view on the windshield.



● Not acceptable

Damage to the field of view of the windshield.

Damage to the windscreen or vehicle windows of any kind, regardless of their size or their location —, which may cause a layer of glass to crack.

Point damage to the window surface, such as damage caused by pebble impact, may also fall into this category.



DOOR, BOOT AND WINDOW INSULATION

● Acceptable

Door and boot insulations, on which traces of normal use are visible.



● Not acceptable

Incomplete, torn or deformed window insulation, regardless of the size or location of the damage. Incomplete or damaged (e.g., torn) door and boot insulations.



BODY/STICKERS



Not acceptable

Any film or stickers (including promotional stickers) not removed by the L from the surface of the vehicle, or marks left after the removal of such stickers (including damage to paintwork).

Blurred or discoloured paintwork, uneven tint or gloss caused by stickers or films applied to the surface of the vehicle.

Traces left by unknown substances (e.g. tar) which are difficult to remove from the bodywork or any part of the vehicle.



HEADLAMPS AND LAMPS

● Acceptable

Damage to the surface of the headlamps and lamps, which has not caused the glass or the transparent shield to crack, so that the proper functioning of the lamps is not impaired.



● Not acceptable

Any damage to the headlamps or lamps, regardless of size, which interferes with their proper operation (e.g. broken clamps, even if they have been glued back.)

Traces of scratches or gravel impacts on the surface of the shield. Cracked glass surface. Cracked transparent shield. Broken headlight height adjuster.





INTERIOR TRACES OF INTENDED USE

● Acceptable

Fixtures in the interior of the vehicle (e.g. dashboard, centre console, door trim and carpets) which shows signs of normal use - for example faint stains on the door trim - but which does not contain dirt that can only be removed by special methods



● Not acceptable

Fixtures in the interior of the vehicle (e.g. dashboard, centre console, door trim and carpets) that has stains that can only be removed by special means (e.g. sticker residues).

Any scratches or cracks visible on the dashboard. Any damage to screens, touch screens, cracks, scratches, non-functional condition.

Malfunction, defective operation or any mechanical damage to various electronic equipment such as on-board computer, navigation, audio, lighting.





INTERIOR

 Not acceptable

Damage to equipment in the interior of the vehicle (e.g. dashboard, centre console, door trim and carpets). Scratches on the centre console. Burned holes.



INTERIOR / MECHANICAL DAMAGES

 Not acceptable

Damage to equipment in the interior of the vehicle (e.g. dashboard, centre console, door trim and carpets). Shields, casings and clips that reduce or limit the comfort of using the vehicle. Damage to the roof upholstery or door pillar upholstery, e.g. burn marks or tears.



, SEATS, SAFETY BELTS

● Acceptable

Seats that show signs of normal use, such as: slightly worn upholstery (provided it is not torn), deformed upholstery foam (provided it is not caused by overloading the vehicle), stains (provided they can be easily removed).



● Not acceptable

Damaged seat upholstery with, for example, cracks, tears, cuts or burnt holes in the surface.

Seat upholstery with stains that require a special procedure to remove.

Seat upholstery with durable stains. Seat upholstery contaminated with substances (e.g. chewing gum) that require a special procedure to remove. Defective seat belts, defective adjustment mechanism or if the belt material is damaged, e.g. burnt, cut or torn.





INTERIOR/ OTHER ACCESSORIES

 **Not acceptable**

Traces left by the Lessee after installing additional accessories, such as drill holes (even if the installed device remains part of the vehicle), adhesive residues, dents.

Assemblies left in the vehicle.



BOOT

● Acceptable

Luggage compartment and column upholstery showing signs of intended use, such as a slightly worn surface or scratches from the traditional transport of goods.



● Not acceptable

Damaged elements of the boot interior (including upholstery), for example: stains, cracks, ruptures, burned-out holes and dents.

Any damage that interferes with the function of the luggage compartment. Stains on the inside of the boot on its elements (stains and odours of animal origin).



WHEELS, WHEEL PLATES, SCRATCHES, MECHANICAL DAMAGES

● Acceptable

Scratches on the edge of the wheel rim or cracking of the coating, if no loss of material is caused. Scratches on the surface of the hubcap and chipping of the protective coating.



● Not acceptable

Damage to the edges or wheel plate (e.g.: deformation or missing parts). Damage to the hubcap, such as cracks, deformation, dents. Incomplete or poorly fitted hubcap. Any mechanical damage to the tyres, such as bumps, holes, misplaced pads, signs of side repairs.





VEHICLE/ EQUIPMENT



Not acceptable

The absence of any item of original equipment of the vehicle provided by the Lessor, such as shelves, grilles, shields.

The absence of grilles, such as the radiator grill or the radio shelf grille.

Missing antenna. Missing door handle.



VEHICLE/ EQUIPMENT

 Not acceptable

Missing or different parts in the engine compartment (compared to the factory equipment provided by the Lessor), any damage to the equipment in the engine compartment or any part of the equipment which is incompatible with the manufacturer's technical specifications.

Any recent damage to the vehicle, compared to the condition in which it was received, such as cracks, tears, poorly fitted grilles on the body (lower protection panel, inner mudguard arches, etc.).

The absence of any original spare part provided by the Lessor, e.g.: a missing grille for the inner fender arches.

Incomplete repair kit, such as missing car jack, wheel wrench, wheel guard or spare wheel.

